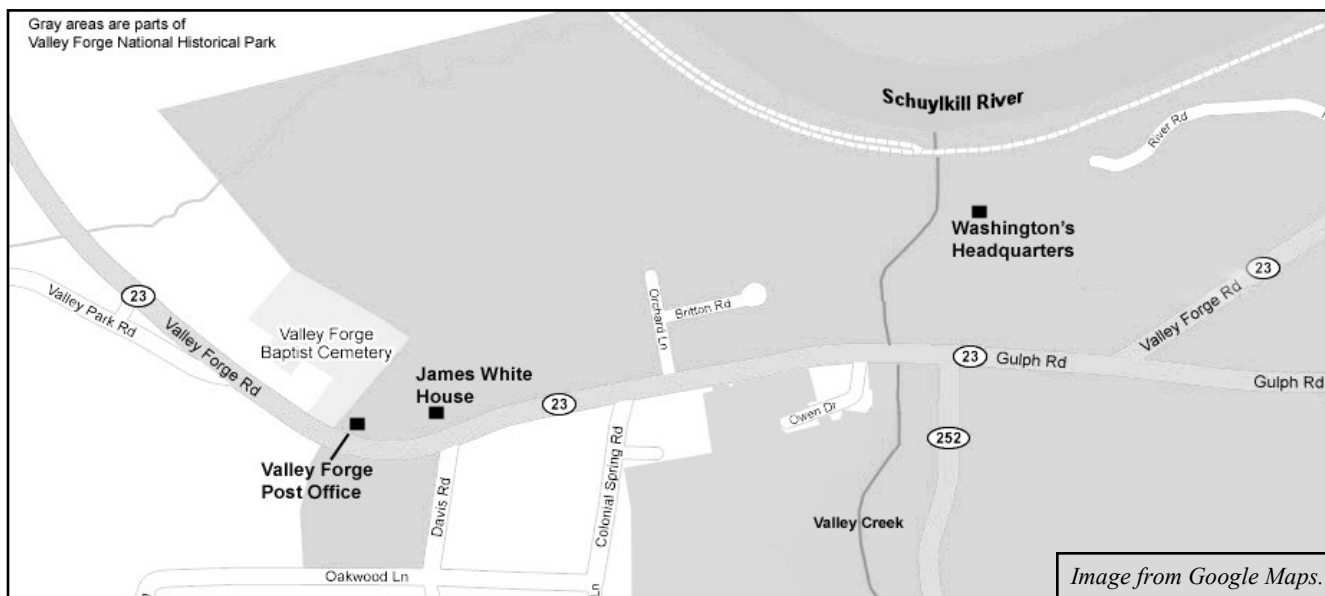
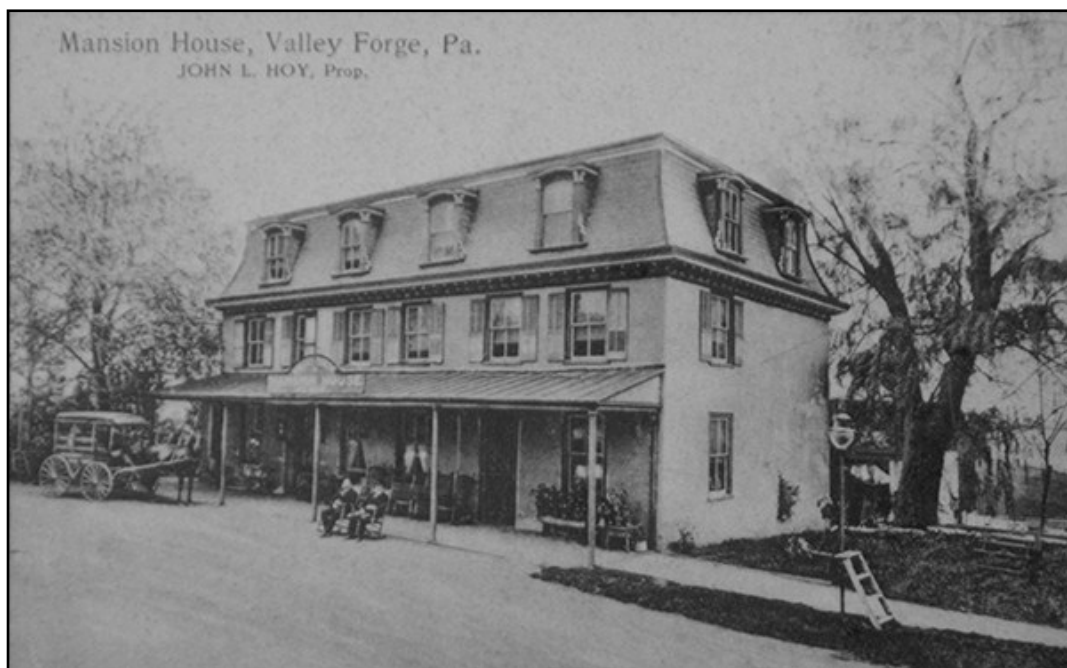


The James White House

Mike Bertram



At the time of the Valley Forge encampment, James White owned a farm of 280 acres lying between the Schuylkill and Tredyffrin Township with an eastern boundary of Valley Creek. This was the eastern end of Charlestown, now Schuylkill Township. The farmhouse is almost certain to have been used by the Continental Army as it was so close to Washington's Headquarters. It has been speculated that General Von Steuben lodged there, and also that it was used as the Adjutant General's quarters, but there is no evidence to support either occupation.



By early in the 19th century the farm had been reduced in size to 74 acres. Bernard Hoy purchased the property in 1861 and the Hoy family ran it as a hotel, known as the Mansion House and the Valley Forge Hotel, into the 20th century.

Postcard from TEHS Archives.

Valley Forge State Park acquired the property in 1945. In 1963-1965 it was rebuilt in colonial style. The house is no longer open to the public.



House under reconstruction. *Courtesy of Valley Forge National Historical Park.*



Present day view, looking north. *Mike Bertram, February 2009.*