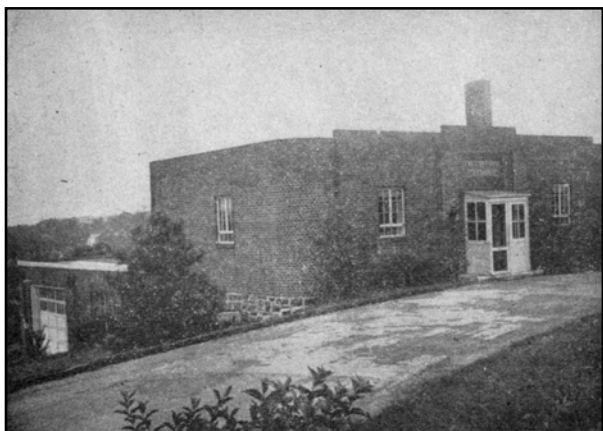


Then... and Now

The Tredyffrin Township Building/Timothy School



Original township building, looking southwest.



Expanded township building, looking southeast. *Both photos from the TEHS archives.*

In 1940, Tredyffrin Township purchased a two-acre plot of land in Berwyn on the south side of Old Lancaster Road, backing onto the railroad. The Township built offices for its staff and garages to house its equipment. Later the building was significantly expanded. The Township moved to its present building on Du-Portail Road in 1995, and in August 1998 the Timothy School for autistic children took over the old building. The school has made interior changes to the buildings but the exterior remains much the same. The Timothy School is a non-profit entity that was established in 1960. Their current enrollment is 65 children, who come from twenty-seven school districts in the five-county area of southeastern Pennsylvania.



The Timothy School as it looks today. *Mike Bertram, December 2009.*