



The *History Quarterly* is published four times a year by the Tredyffrin Easttown Historical Society

720 First Avenue  
Berwyn, PA 19312

A 501(c)(3) organization.

#### Officers

Roger Thorne, *Chairman*  
J. Michael Morrison, *President*  
John Senior, *Vice-President*  
Loyd Pakradooni, *Secretary*  
Mary Mayer, *Treasurer*

#### Editors

Bonnie Haughey  
Tim Lander

#### Distribution

Cheryl Leibold  
Bill Keltz  
Rick Belber  
Barbara Craig

#### Subscriptions

A subscription to the *History Quarterly* is included with each membership level. Copies will be mailed to your home.

#### Annual Membership Dues

Family: \$40  
Student: \$24  
Patron: \$125

Please visit our website for a membership application and details on upcoming programs.

[www.tehistory.org](http://www.tehistory.org)

ISSN: 1938-5676

## From the Editor

Following the double issue on the Generals' Quarters, this issue of the *Quarterly* returns to a more traditional format, featuring five shorter articles, all composed by our Society members. Many thanks to Cheryl Leibold, Mike Bertram, Sean Moir, Jean Harlow, and Dick Kurtz for their time and effort.

Cheryl delivered her presentation on the Cassatt family at a well-attended October 2011 meeting of the Society. That remarkable clan certainly left their mark on Tredyffrin and Easttown, but Cheryl makes it clear that Mary's fame will long outlast that of her wealthy businessman siblings. If you are interested in learning more about the Cassatts, consider the following books, in addition to the references cited in Cheryl's end notes:

*The Greater Journey: Americans in Paris*, by David McCullough. Published last year, this book provides insights into a number of American artists who studied and worked in France, with Mary Cassatt prominent among them.

*Conquering Gotham*, by Jill Jonnes. An engaging story of Alexander Cassatt's vision to construct the Pennsylvania Railroad tunnels under the Hudson River, terminating at majestic Pennsylvania Station.

The previous issue of the *Quarterly* made reference to the Davis-Armstrong-Sparks map. Mike's story provides additional background on the map and the value it brings to our understanding of the Valley Forge encampment.

Continuing with the Revolutionary War theme, Sean has added a high-tech twist to the use of maps to tell the story of the Philadelphia Campaign. He has presented his show to multiple audiences in Chester County, and neighboring locales as well, and it never fails to bring a new perspective to that critical era of our nation's birth.

Did you know that Girl Scout cookies originated on the upper Main Line? You will learn about that, and more, in Jean's account of the early days of Girl Scouting in the Philadelphia area. Many prominent local residents were instrumental in the growth of our local Scout troops, which continue to flourish today.

Apparently not all Main Line matrons were well-respected scout leaders. Dick's tale of alleged wrongdoing by a pair of Devon sisters has a happy ending, but is intriguing nonetheless.

I'm sure other Society members have stories that are waiting to be shared with future *Quarterly* readers, so don't be shy! We're waiting to hear from you.



The brainchild of Alexander Cassatt, New York City's Pennsylvania Station opened in 1910, and was demolished in 1963. *Courtesy of the Pennsylvania State Archives.*

Authors retain copyright of their contributions. The Society does not accept responsibility for the accuracy of the information in the articles. The Society retains the right to republish this material.

Front Cover: *Young Thomas and His Mother*, by Mary Cassatt, ca. 1893, pastel on paper. *Courtesy of the Pennsylvania Academy of the Fine Arts.*

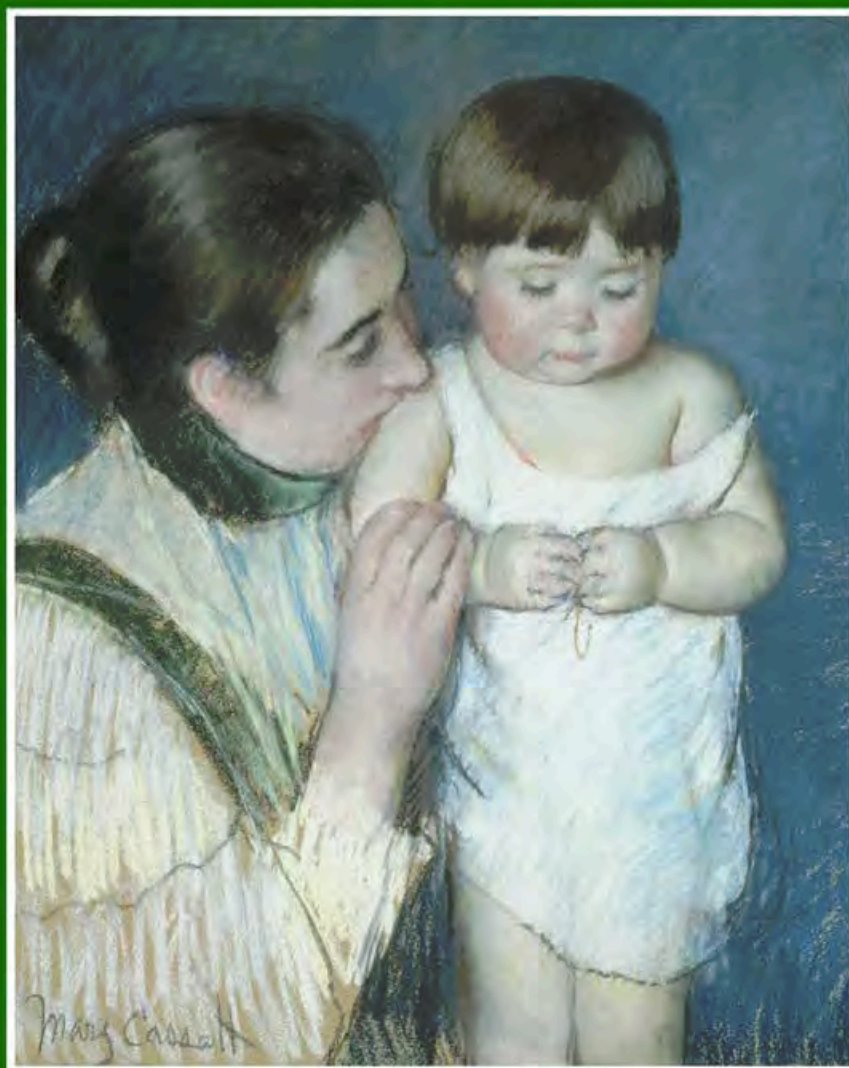
**VOL. 49 NO. 3**

**SEPTEMBER 2012**

**\$10**

# **TREDYFFRIN EASTTOWN HISTORY QUARTERLY**

## **The Cassatt Family**



**Historic Maps, Girl Scouts, and Devon Smugglers**



Back Cover: *Ellen Mary Cassatt with a Large Bow in her Hair*, by Mary Cassatt, 1909, oil on canvas.  
From [WikiPaintings.org](http://WikiPaintings.org).

